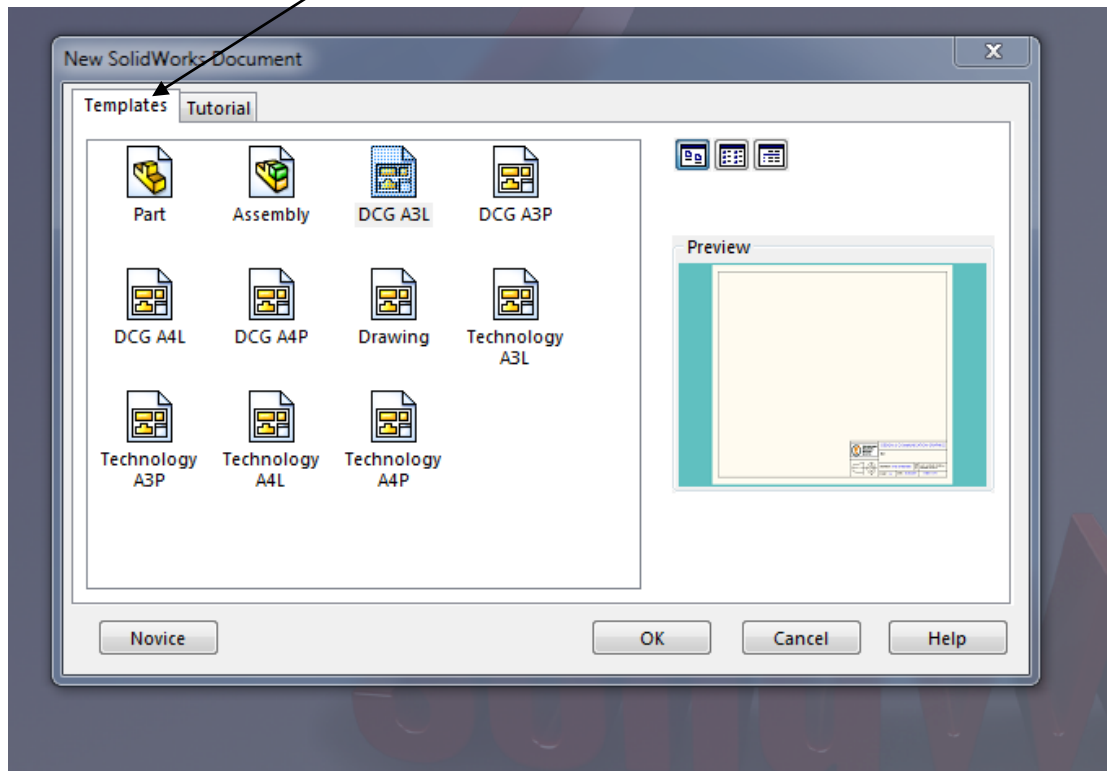


## *Modifying / Creating drawing Templates.*

Open SolidWorks 2009

Select: **File, New.**

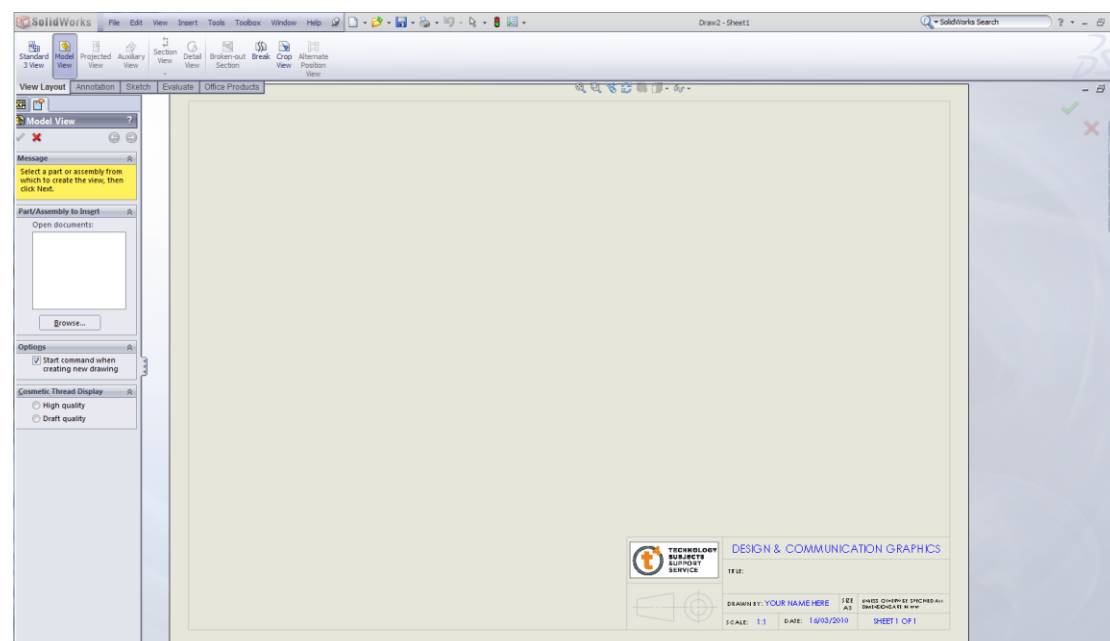
Make sure that the **Templates Tab** is selected.



Highlight the **DCG A3L** icon.

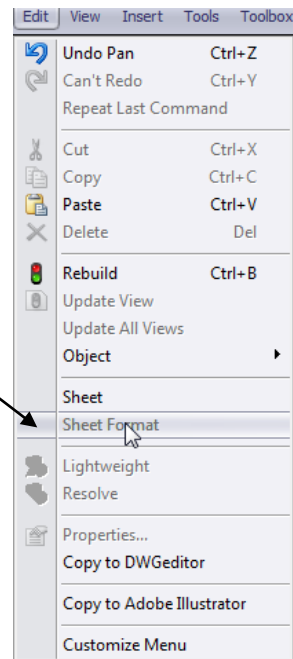
Click **OK!**

The Drawing sheet now opens.

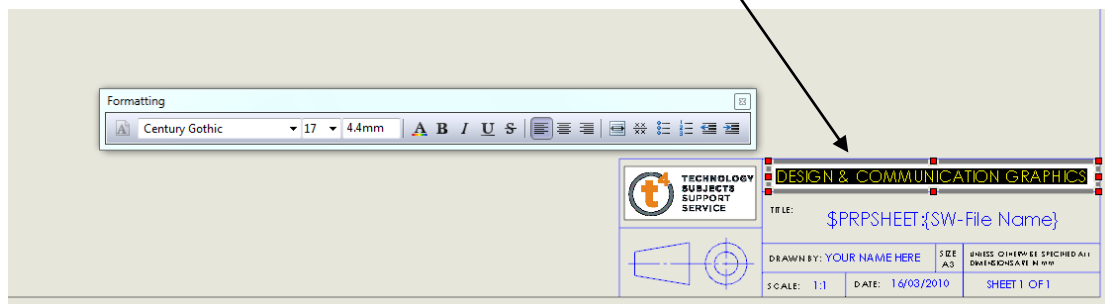


Go to **Edit** on the menu bar.

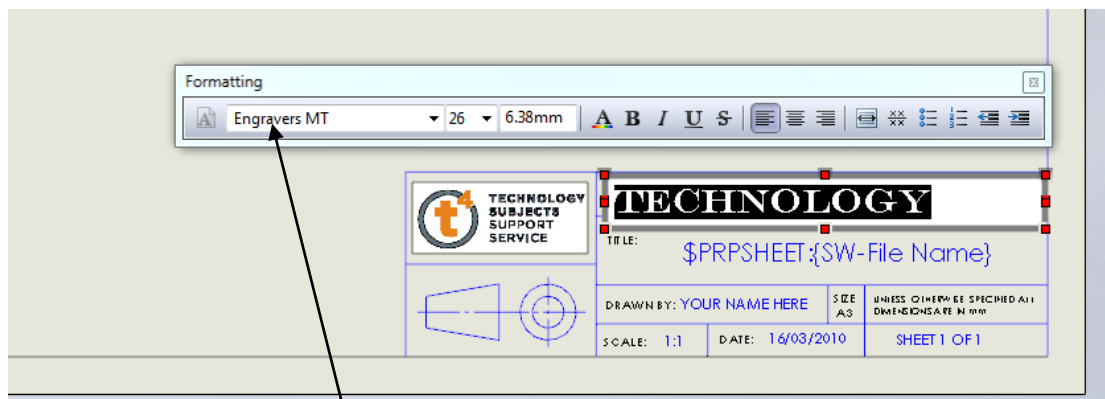
Select **Sheet Format**.



**Double click** on the **Design & Communication Graphics Title**, the text editing window appears as shown below.

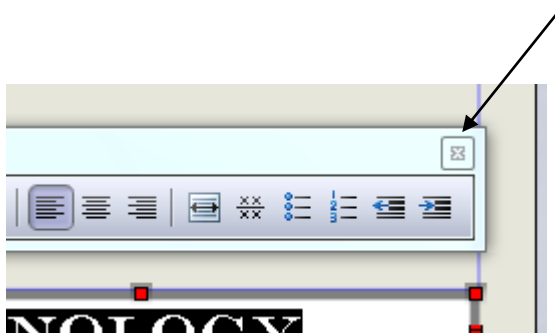


Type **TECHNOLOGY** in the space. The **Font** and **Font size** may now be changed using the editing options in the **Formatting** window.

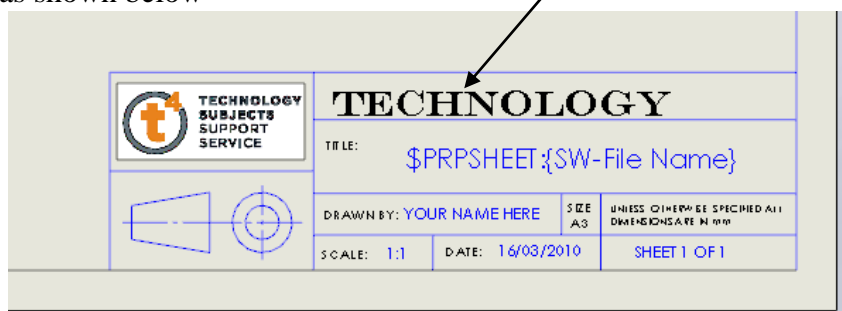


I have selected **EngraversMT** as a **Font** type and **26** point as a **font size** as shown.

Close the formatting window by clicking on the **X** in the corner box.



Click anywhere on the page and the word **TECHNOLOGY** should now appear in the window as shown below

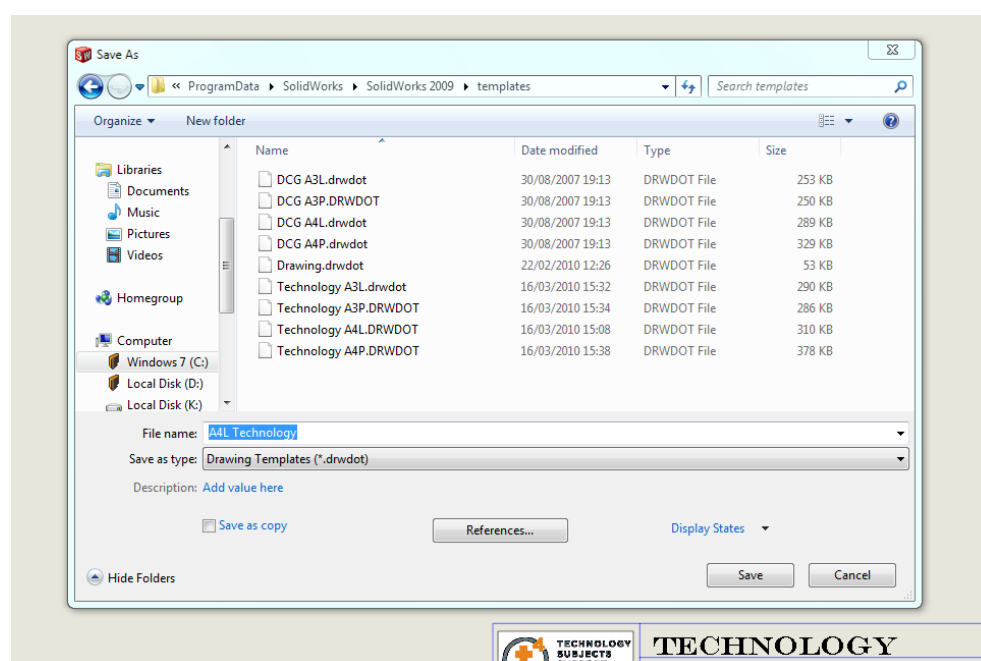


Now go to **File** on the main menu,

Select: **Save As**.

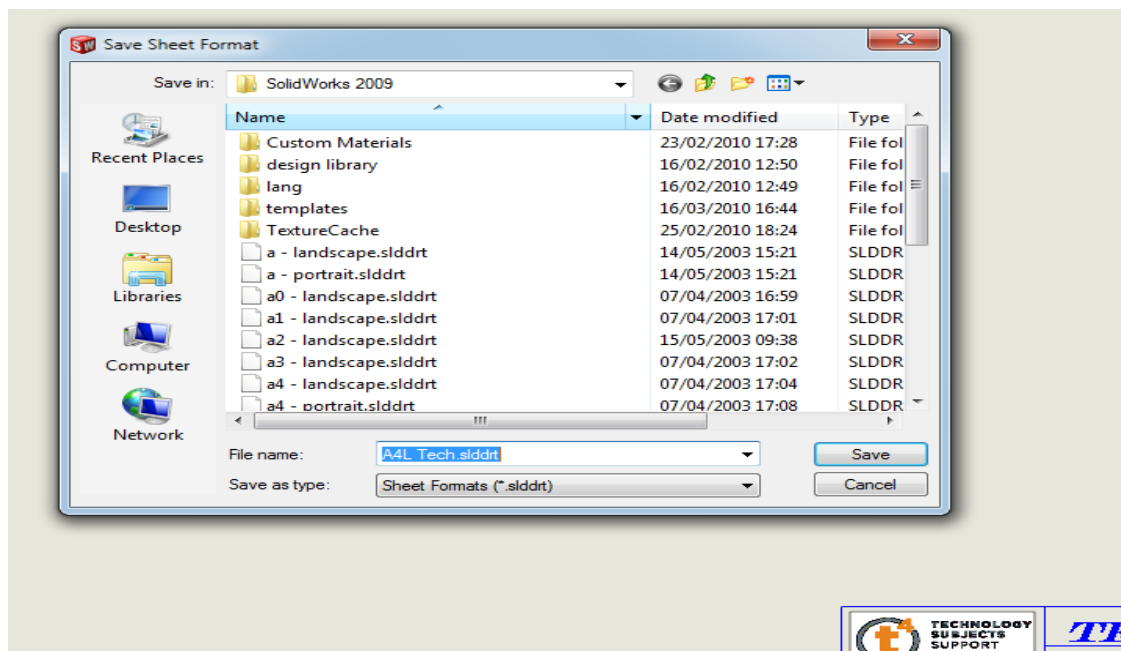
**Enter a file name.** I have used **A4L Technology** (A4L = A4 Landscape)

Make sure that the **file type window** shows **Drawing Templates**. If not select it by clicking on the little down arrow icon at the right side of the window.



Click on **Save**.

Now go back to the **Main menu**, Select **File** and go to **Save Sheet Format**. Enter a file name in the window that opens, I used **A4L Tech** for the sheet format. **Click on save**. Accept the default paths to save the files.



You should now have that template available the next time you start SolidWorks. It is shown highlighted below.

